

HELLO, WE ARE NHOOD POLAND

LAND ADVISORY ŻORY

JANUARY 2025

1 The materials and content included in this document ("Content") are the property of Nhood Services Poland Sp. z o.o., based in Warsaw (Nhood), or its licensors and are protected by copyright law and other applicable legal provisions. Without the express written consent of Nhood, it is prohibited to copy, reproduce, modify, distribute, share, or otherwise use the Content, in whole or in part, in any form or by any means. Violation of the above prohibitions, as well as any other infringement of intellectual property rights related to the Content, may result in the initiation of appropriate legal action.

HELLO, WE ARE NHOOD

As a real estate operator, Nhood creates, activates and transforms real estate assets across all classes, from retail, housing, offices, and logistics to mixed-use, while contributing to a new urban vision.

We bring together the main business areas of real estate with solutions to support public and private property owners, as well as companies and brands, in creating value for their assets.

Inspired by the **15-Minute City** and working with territory expertise in each country or city, we make sure your projects and the neighbourhoods they are part of work for the common good.

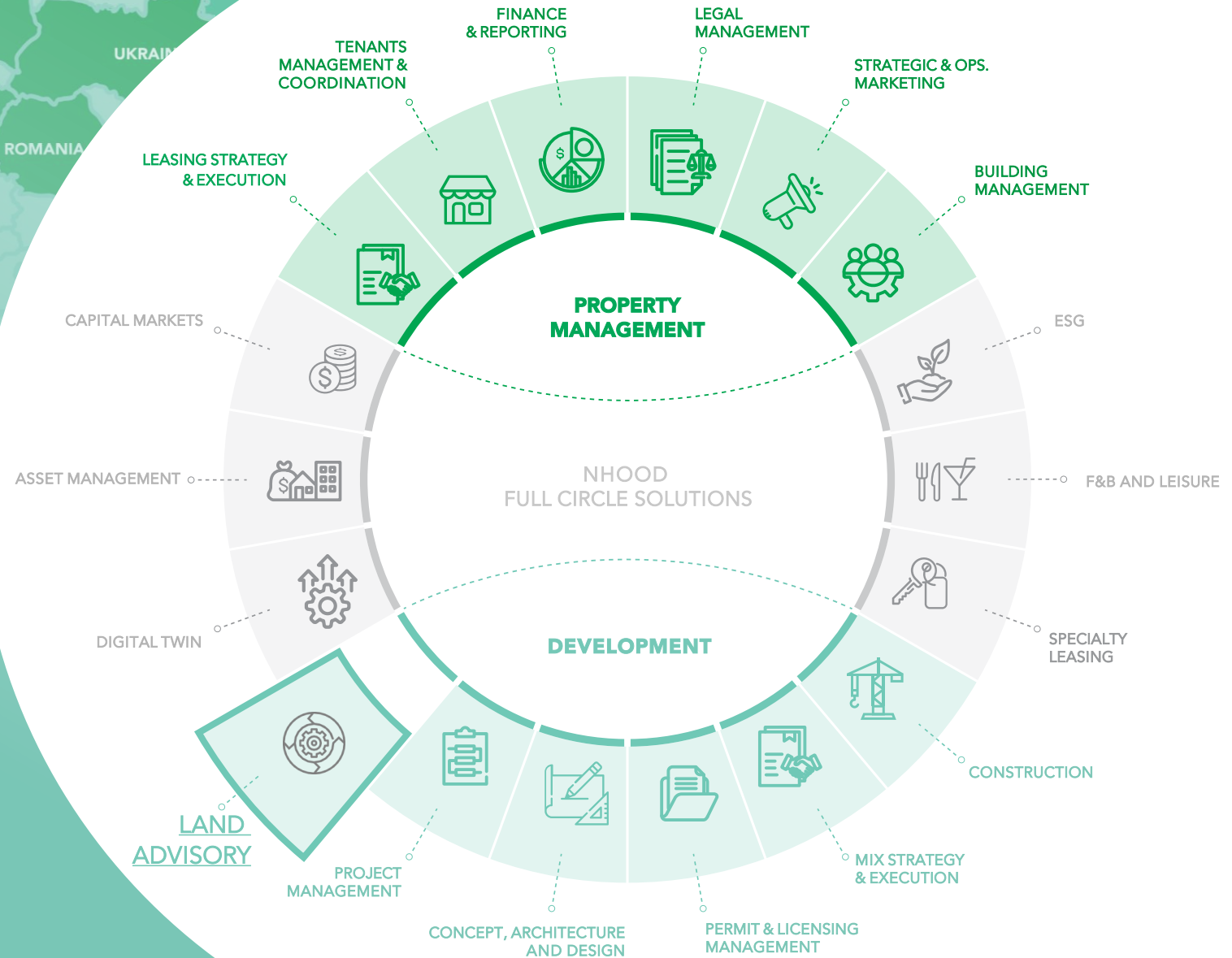


TABLE OF CONTENT

1. Front page
2. About Us
3. Table of content
4. General information
5. Nearby locations
6. Site view
7. Development capacity
8. Masterplan Źory
9. Contact



ŻORY

GENERAL INFORMATION



62 sqkm
Area of Żory



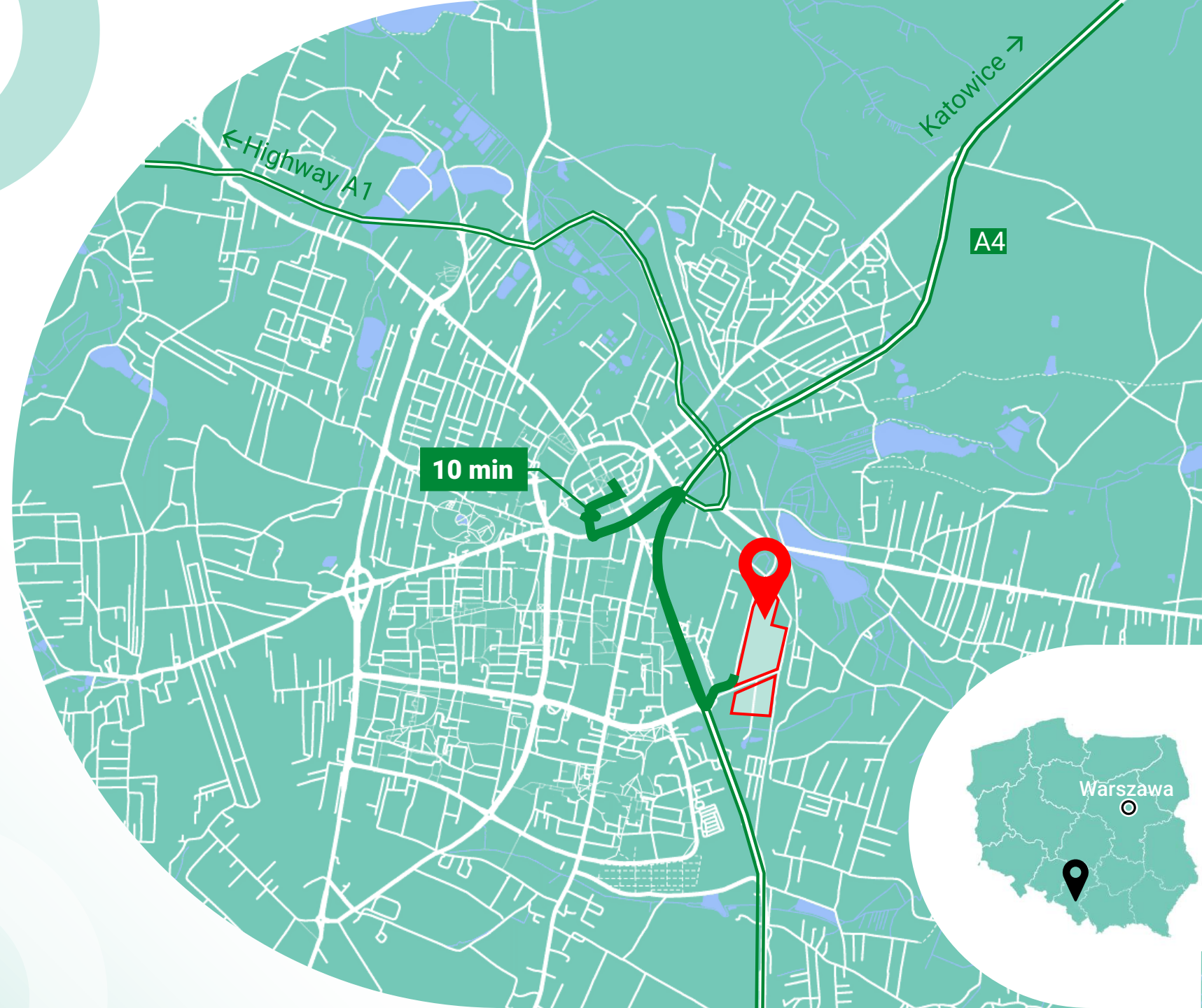
62 472
Residents



~7 000 pln
Average salary



3,2 %
Unemployment rate



Source: stat.gov.pl

4 From 2024

ŽORY

NEARBY LOCATIONS



9,86 + 7,16 = 17,02 ha

Total Plot area



2

Number of plots



Plot Border



Shopping mall



Hypermarket



Gas Station



DIY Shop



Fastfood



RTV AGD



Garden Store



Sports shop



Car dealership



ŽORY

SITE VIEW



ŽORY

SITE VIEW



7,16 ha

B

ŽORY

DEVELOPMENT CAPACITY

Residential



98 667 sqm

Total plot area



ŻORY

MASTER PLAN



Planing Status

Resolution No. 449/XXXII/32 of the City Council of Żory of 29 July 2021 on amending the local spatial development plan for the city of Żory



Plot usage

A2UC1: areas for commercial facilities over 2,000 m², including trade, catering, craft, cultural, religious, social, health, veterinary, tourism, sports, recreation, public services, offices, educational institutions, postal and telecommunications, and multi-family housing.



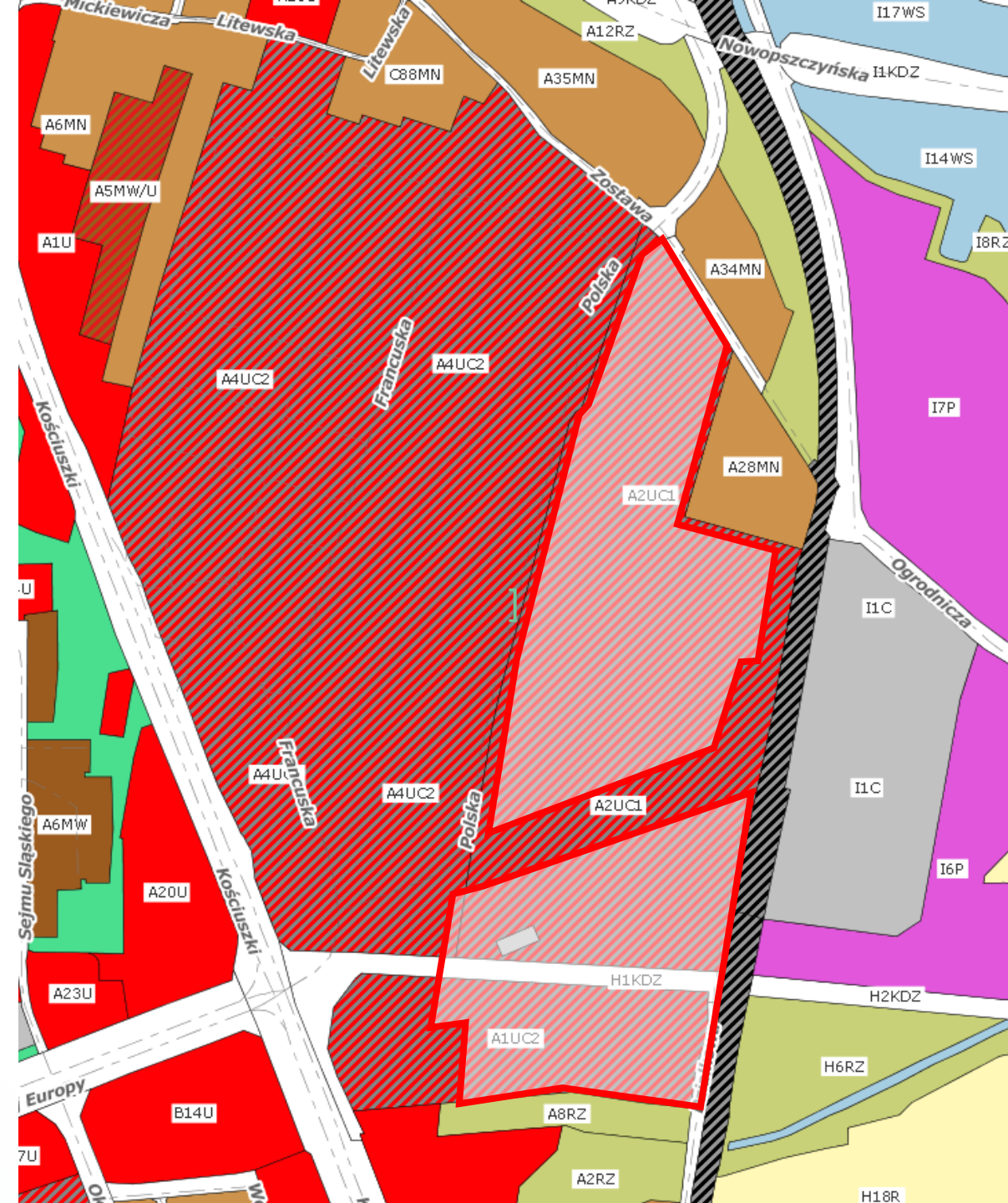
Limitations

UC1 ban on: agricultural, animal, and horticultural production, funeral homes, road transport services (including petrol stations and vehicle service stations), stonemason's workshops, waste processing facilities, storage yards, and dumps.



Road infrastructure

Plot location by the Polska Str. closely connected to the main road no.81 (Tadeusza Kościuszki)



CONTACT US

Land Advisory Team

landadvisory@nhood.com
+48 502 446 792

